

Date:

Measurements Chart, Men's

Please FILL in entire chart to help us serve you best!!!

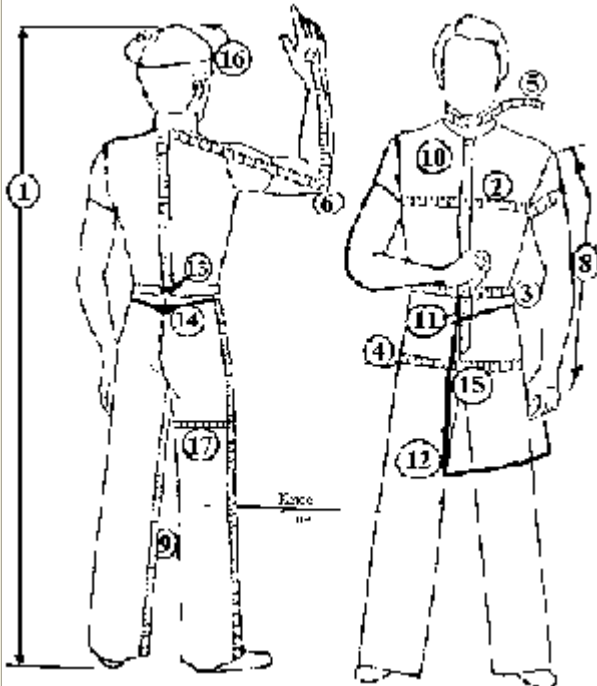
Name: Unit:

Phone: E-Mail:

Men's Height Chart
 5' 4" to 5' 8" :Short
 5' 8" to 5' 10" :Regular
 5' 10" to 6' 3" :Long/Tall
 6' 3" to 6' 7" :X-Long

Desired Fit
 Loose Fit
 Snug Fit

Please MEASURE Carefully - Incorrect measurements yield POOR FITTING clothing!



Present Day Sizes Generally Worn

Suit Coat: (i.e. 42R, 46L)

Trousers: waist, inseam

Shirt: neck, sleeves

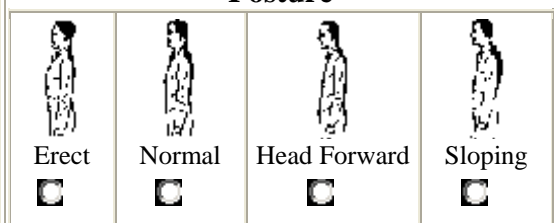
Weight: lbs. (Important!)

Shoe Size: (i.e. 9 1/2 D)

How to Measure

1. **HEIGHT:** Standing against a wall without shoes.
2. **CHEST:** Around the fullest part, take a deep breath. (Coats sizes 36-44 Short add 10% to price, 46 & 48 add 15% to price, 50 & 52 add 30% to price and 54 & 56 add 45% to price)
3. **NATURAL WAIST:** Taken around the body at the belly button. (Waist sizes 40"-44" add 10% to price, 46" & 48" add 25% to price and 50" - 54" add 45% to price)
4. **HIPS:** Taken around the fullest part of the seat.
5. **NECK:** Taken around the neck at the Adam's apple.
6. **SHIRT SLEEVE:** From neck base at center of back, along shoulder, over bent arm to wrist.
7. **LARGEST CIRCUMFERENCE OF STOMACH:** Taken around the largest part of the stomach or belly.
8. **COAT SLEEVE:** From top of arm at shoulder to 1" above first set of knuckles.
9. **FINISHED INSEAM:** Along seam on inside of leg to desired length.
10. **FRONT WAIST LENGTH:** From the spot where the two collar bones meet, measure to the natural waist.
11. **FINISHED LENGTH OF SHELLS:** The length you want your shell jacket, neck to finished bottom.
12. **FINISHED FRONT OF FROCKCOATS:** The length you want your frockcoat, neck to skirt bottom.
13. **BACK WAIST LENGTH:** From the small bone at the top of the spine to the waistline in back.
14. **FINISHED BACK LENGTH OF SHELLJACKETS:** The back length you want your shell jacket to be when finished.
15. **SKIRT LENGTH OF FROCKCOATS:** Length of skirt, from waist seam to bottom of skirt.
16. **HEAD CIRCUMFERENCE:** Taken around the head just above the ears.
17. **THIGH:** Largest part of thigh, for chaps.

Posture



Figure



Chest



Shoulders

